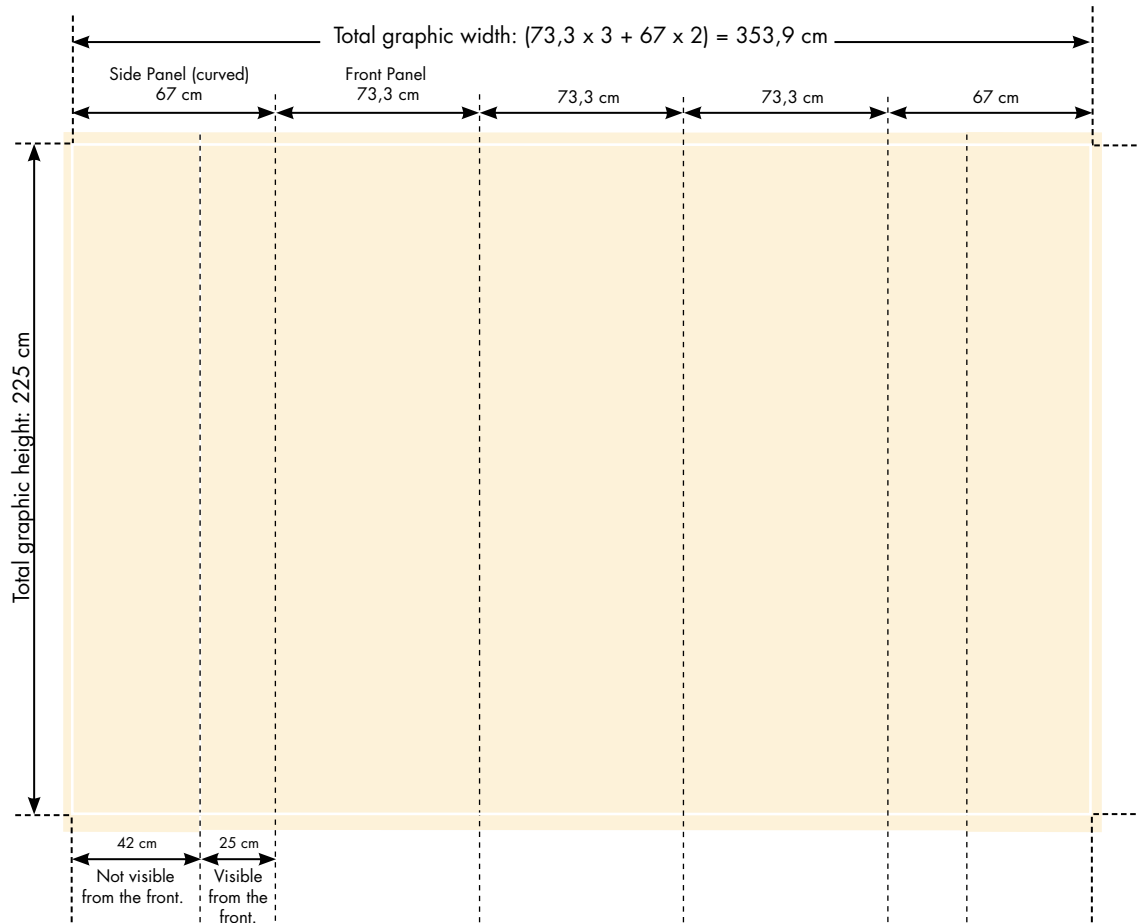


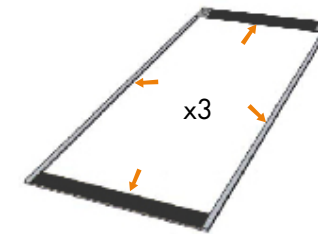
Pop Up S10

Version (3x3 Straight)

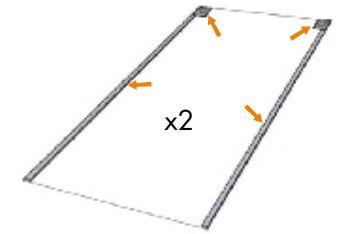


Dimensions	73.3x225cm x3 + 67x225cm x2
Available versions	Curved: 1x3, 2x3, 3x3, 4x3, 5x3 Straight: 1x3, 2x3, 3x3 , 4x3, 5x3
Assembly	Magnetic locks, tapes, and guides. (No tools required)

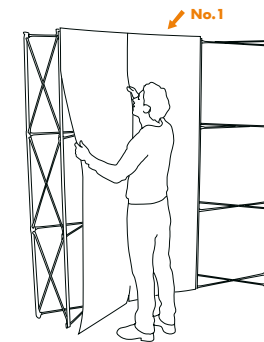
Assembly Instruction



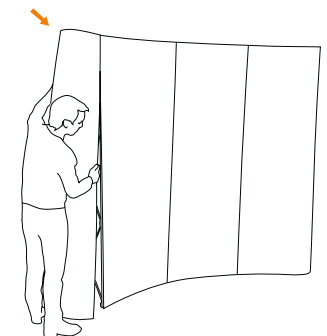
Front Panels: Start by mounting the provided top and bottom strips, according image above. Then carefully mount the magnetic tape along the sides of the panels.



Side Panels: Mount the top corner strips on the side panels. Assemble the magnetic tapes in the same way as in previous step.



Mount the front panels according image above. They are easily guided and attached with the magnets in the top corners of each panel. For best result always start with the centre panel.



The side panels are assembled last in the same way as the others. Manually help curve the panels to easier get them in place (depending on print material).